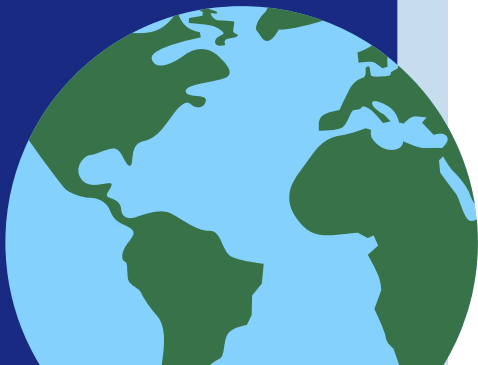




SWEET

a global network of
pediatric Type 1
Diabetes Centers



KEY INFORMATION

● *Who We Are*

SWEET is a global network of T1D centers committed to the vision of equal, high-quality care for all children and adolescents with diabetes worldwide.

● *What We Do*

We focus on reducing inequalities in care, setting high standards and using benchmarking and data-driven research to improve outcomes.

● *Our Reach*

SWEET started as a european project in 2008 with 12 members.

After transforming into a legal entitiy in 2011, the network has grown globally.


Today, SWEET is a very diverse network with more than 160 center members from 64 countries working together to optimize diabetes care.

● *Our Impact*

Over 119,000 patients and 1.4 million visits are recorded in our database, driving improvements in care through benchmarking and research.



CONTACT

 **SWEET e.V. Coordination Center**
Diabetes Center for Children and Adolescents
Kinder- und Jugendkrankenhaus AUF DER BULT
Janusz-Korczak-Allee 12
30173 Hannover
GERMANY

 **+49-511-8115-3337**

 **sweet-project@hka.de**

 **www.sweet-project.org**

 **Chairwoman: Prof. O. Kordonouri, MD, Hannover**

Let's grow together!

This QR code leads you to SWEET's Linktree. There you can find our website, social media, application form and a way to get in touch!



Why join SWEET?

Join SWEET and connect with a network of experts, access valuable insights, and contribute to the future of pediatric diabetes care.

Be part of a community and attend the SWEET Annual Meetings to get together.

Be part of an international Pediatric Diabetes Registry and compare your center to others worldwide.

Get access to a free data collection software (DPV) and to our new online Benchmarking platform
- the SWEET Cloud.



Get the chance to work on interesting new research and publication projects.

Participate in our Peer Review Program where you get visited by trained Reviewers from other centers. This is a powerful agent for change.



Harmonize care to optimize outcomes in children and adolescents with diabetes mellitus worldwide

Mission of SWEET

